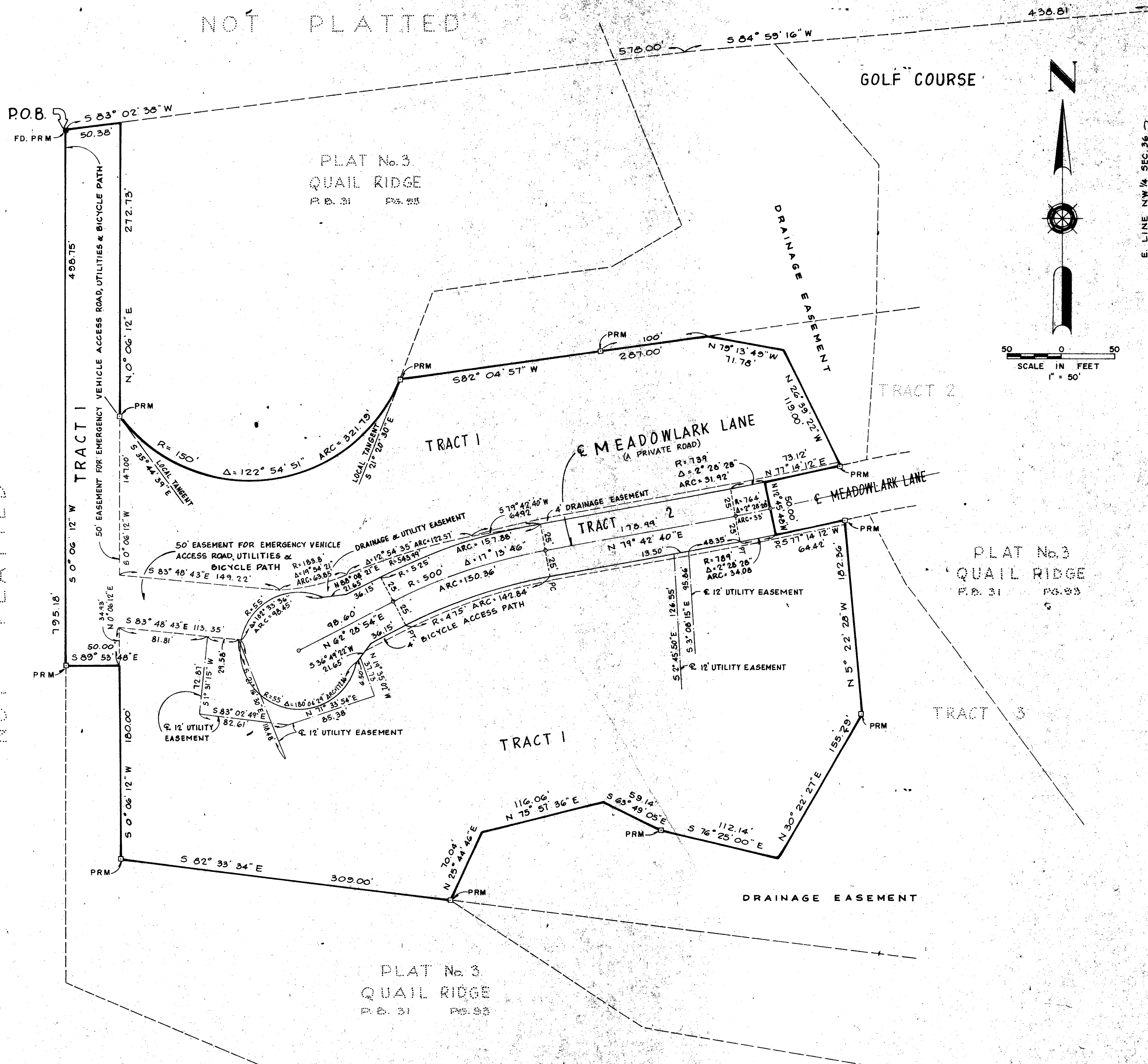


NOT PLATTED



PLAT NO. 3A QUAIL RIDGE

(A PLANNED UNIT DEVELOPMENT)

BEING A SUBDIVISION OF A PORTION OF THE NW/4 OF
SECTION 36, TOWNSHIP 45 SOUTH, RANGE 42 EAST,
PALM BEACH COUNTY, FLORIDA
IN 2 SHEETS SHEET NO. 2

OCTOBER 1975

35

AREA TRACT 1	= 6.3318 ACRES
AREA TRACT 2	= 0.6892 ACRES
TOTAL AREA	= 7.0210 ACRES
TOTAL DWELLING UNITS	= 19
DENSITY	= 2.706 D.U. PER GROSS ACRE

NOT PLATTED

NOTES:
 □ = PERMANENT REFERENCE MONUMENT (P.R.M.)
 ○ = PERMANENT CONTROL POINT (P.C.P.)

MINIMUM SETBACK REQUIREMENTS
 FRONT 25.0 FEET
 SIDE (interior) 15.0 FEET
 SIDE (corner) 25.0 FEET
 REAR 25.0 FEET

PLAT No. 3A QUAIL RIDGE

1000-184

31

THIS INSTRUMENT WAS PREPARED BY
 S. V. HARRIS
 MCKEON, ROOS & COMPANY, INC.
 CONSULTING ENGINEERS
 2930 OKEECHOOBE BOULEVARD
 WEST PALM BEACH, FLORIDA 33401